



United States Department of Agriculture



# Future of MRBI and NWQI



Natural  
Resources  
Conservation  
Service

[nrcs.usda.gov/](https://nrcs.usda.gov/)



## FY 2010

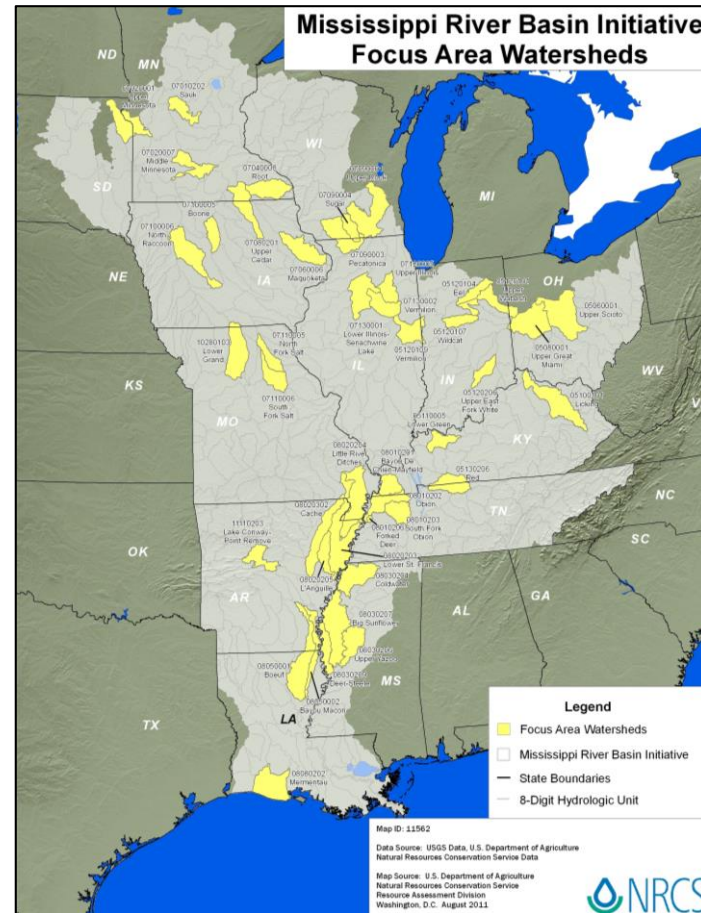
- 12 States
- 41 Focus Areas

## FY 2011

Added two focus areas:

- One in SD
- One in MS
- Now 13 states and 43 focus areas

Arkansas had 7 focus areas



# Mississippi River Basin Initiative Focus Areas, 2012 Arkansas

## 2012 Focus Areas

- 08020301 - Lower White-Des Arc
- 08020303 - Lower White
- 08020304 - Big
- 08020401 - Lower Arkansas
- 08020402 - Bayou Meto

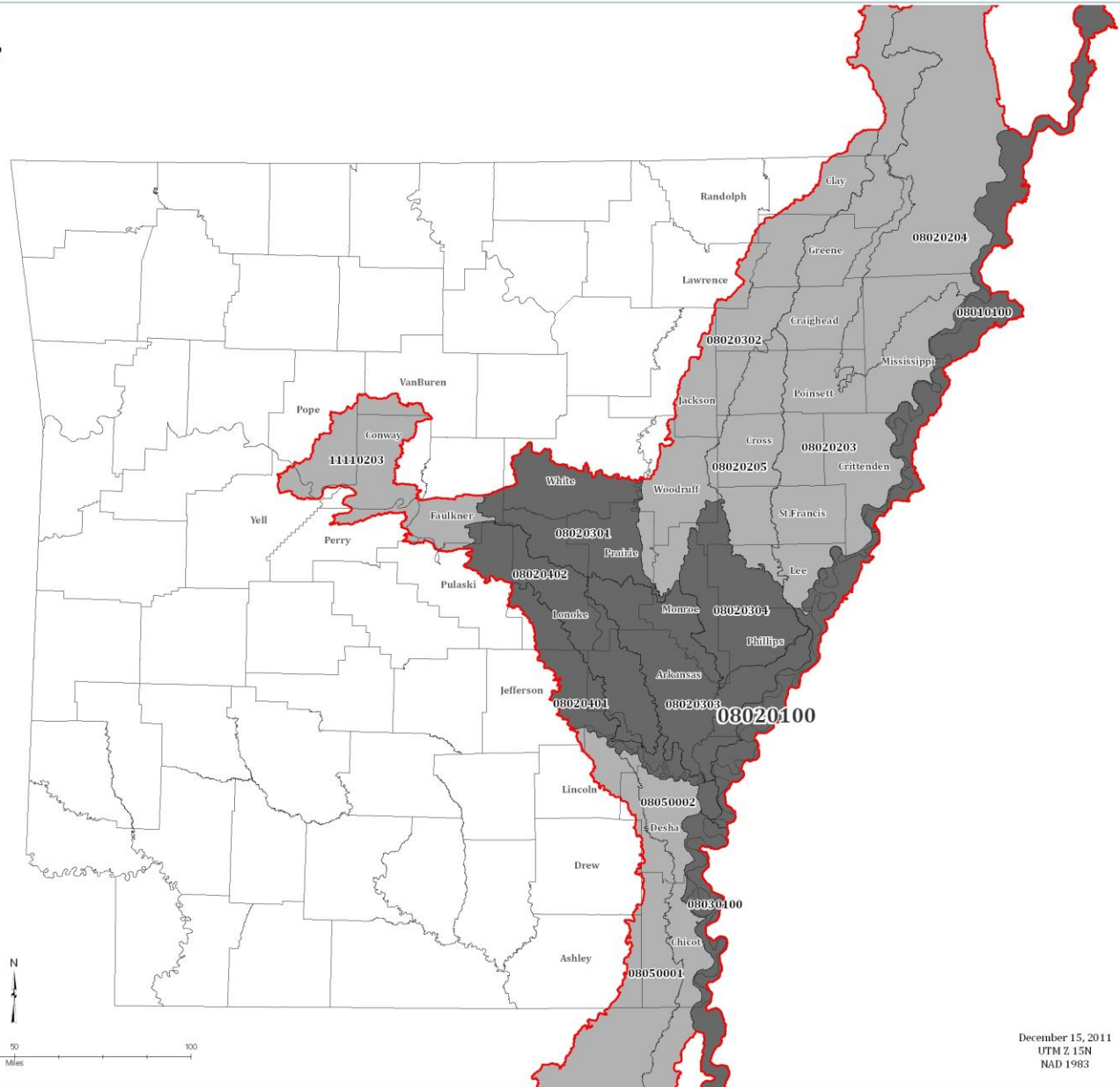
## Batture Lands

- 08010100 - Lower Mississippi-Memphis
- 08020100 - Lower Mississippi-Helena
- 08030100 - Lower Mississippi-Greenville

## Existing Focus Areas

- 08020203 - Lower St. Francis
- 08020204 - Little River Ditches
- 08020205 - L'Angeuille
- 08020302 - Cache
- 08050001 - Boeuf River
- 08050002 - Bayou Macon
- 11110203 - Lake Conway-Point Remove

Comprehensive MRBI Focus Area





### Mississippi River Basin Initiative Focus Areas, 2012 Arkansas

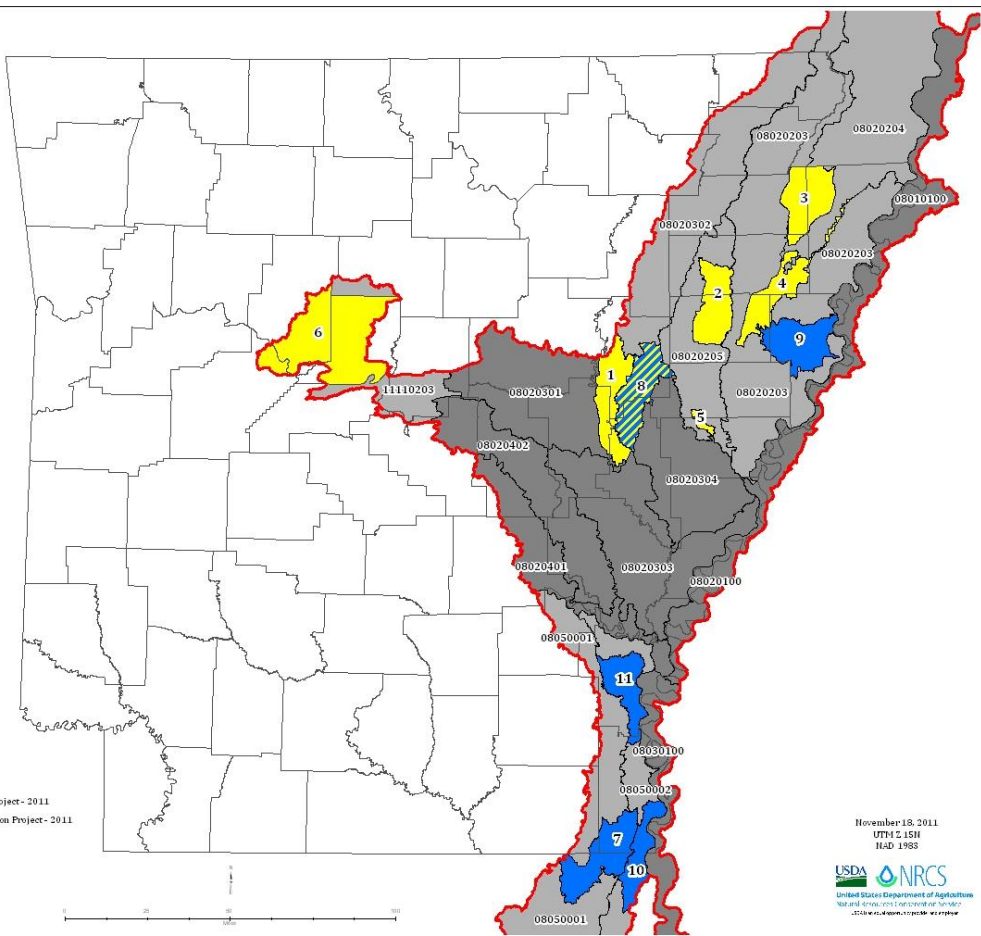
- 2012 Focus Areas**
- 8020301 - Lower White-Bayou Des Arc
- 8020303 - Lower White
- 8020304 - Big Creek
- 8020401 - Lower Arkansas
- 8020402 - Bayou Meto

- Batture Lands**
- 08010100 - Lower Mississippi-Memphis
- 08020100 - Lower Mississippi-Helena
- 08030100 - Lower Mississippi-Greenville

- Existing Focus Areas**
- 08020203 - Lower St. Francis
- 08020204 - Little River Ditches
- 08020205 - L'Anguille
- 08020302 - Cache
- 08050001 - Boeuf River
- 08050002 - Bayou Macon
- 11110203 - Lake Conway-Point Remove
- Comprehensive MRBI Focus Area**

**Project Areas**

- |   |  |
|---|--|
| <span style="display: inline-block; width: 15px; height: 15px; background-color: yellow; border: 1px solid black; margin-right: 5px;"></span> 1 Cache River WREP Project - 2010     | <span style="display: inline-block; width: 15px; height: 15px; background-color: blue; border: 1px solid black; margin-right: 5px;"></span> 7 Bayou Boeuf Project - 2011                               |
| <span style="display: inline-block; width: 15px; height: 15px; background-color: yellow; border: 1px solid black; margin-right: 5px;"></span> 2 L'Anguille Project - 2010           | <span style="display: inline-block; width: 15px; height: 15px; background-color: blue; border: 1px solid black; margin-right: 5px;"></span> 8 Cache River Nutrient Loss Reduction Project - 2011       |
| <span style="display: inline-block; width: 15px; height: 15px; background-color: yellow; border: 1px solid black; margin-right: 5px;"></span> 3 Little River Ditches Project - 2010 | <span style="display: inline-block; width: 15px; height: 15px; background-color: blue; border: 1px solid black; margin-right: 5px;"></span> 9 Lower St. Francis Nutrient Loss Reduction Project - 2011 |
| <span style="display: inline-block; width: 15px; height: 15px; background-color: yellow; border: 1px solid black; margin-right: 5px;"></span> 4 Lower St. Francis Project - 2010    | <span style="display: inline-block; width: 15px; height: 15px; background-color: blue; border: 1px solid black; margin-right: 5px;"></span> 10 Lower Bayou Macon Project - 2011                        |
| <span style="display: inline-block; width: 15px; height: 15px; background-color: yellow; border: 1px solid black; margin-right: 5px;"></span> 5 Outlet Larkin Creek Project - 2010  | <span style="display: inline-block; width: 15px; height: 15px; background-color: blue; border: 1px solid black; margin-right: 5px;"></span> 11 Middle Bayou Macon Project - 2011                       |
| <span style="display: inline-block; width: 15px; height: 15px; background-color: yellow; border: 1px solid black; margin-right: 5px;"></span> 6 Pt. Remove Wetlands Project - 2010  |  |



November 18, 2011  
UTM 2, 15N  
NAD 1983

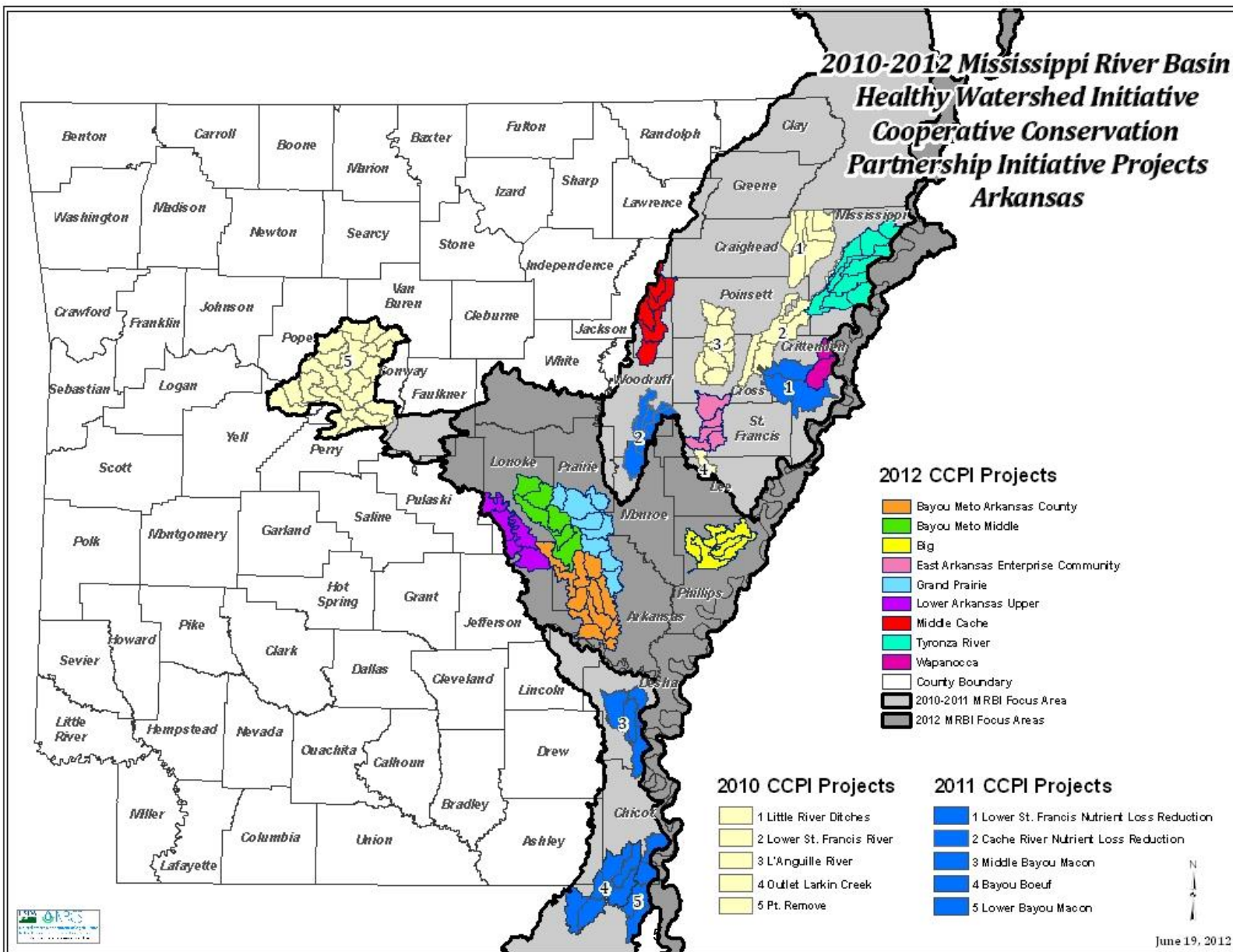


natural  
resources  
conservation  
service

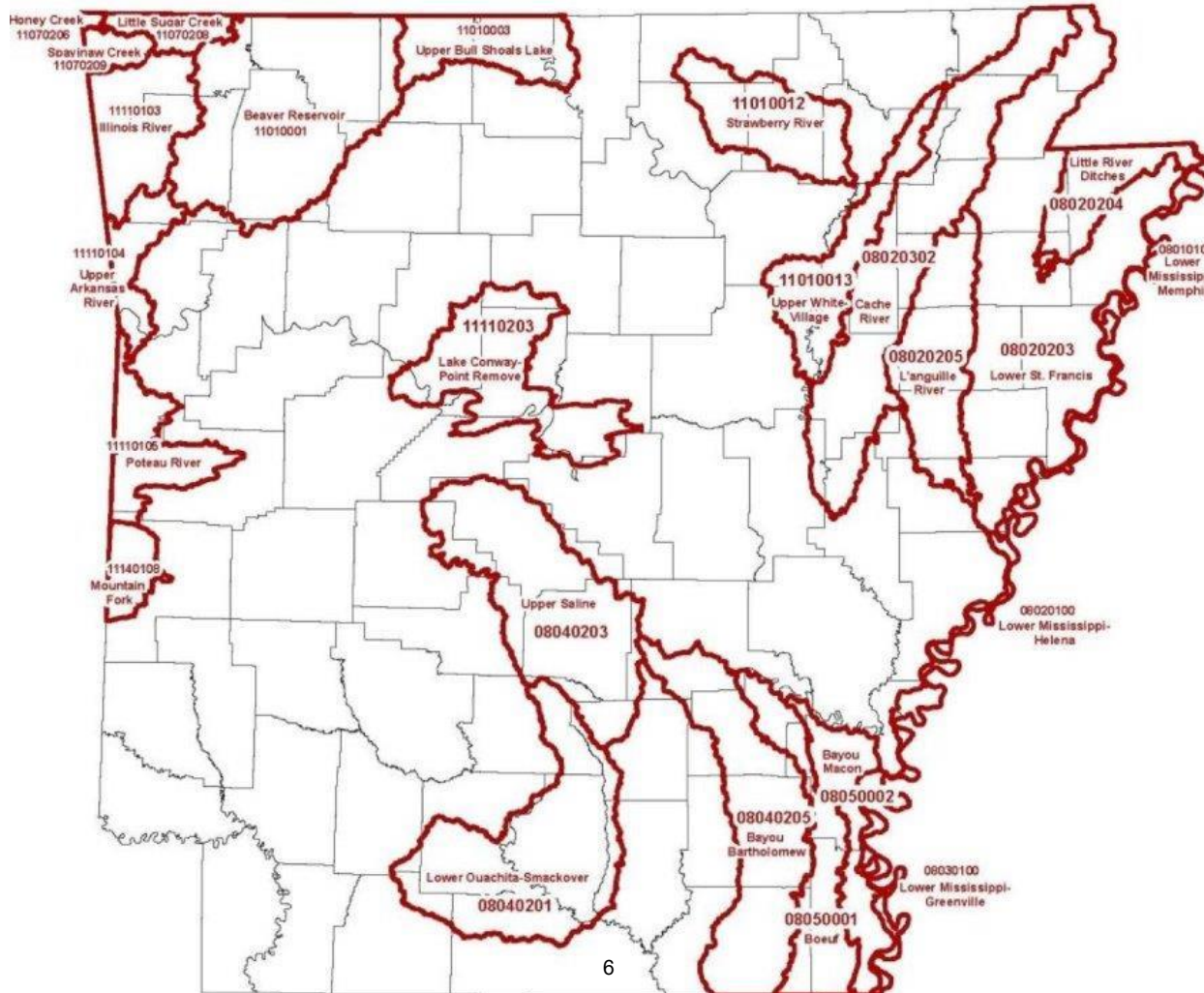


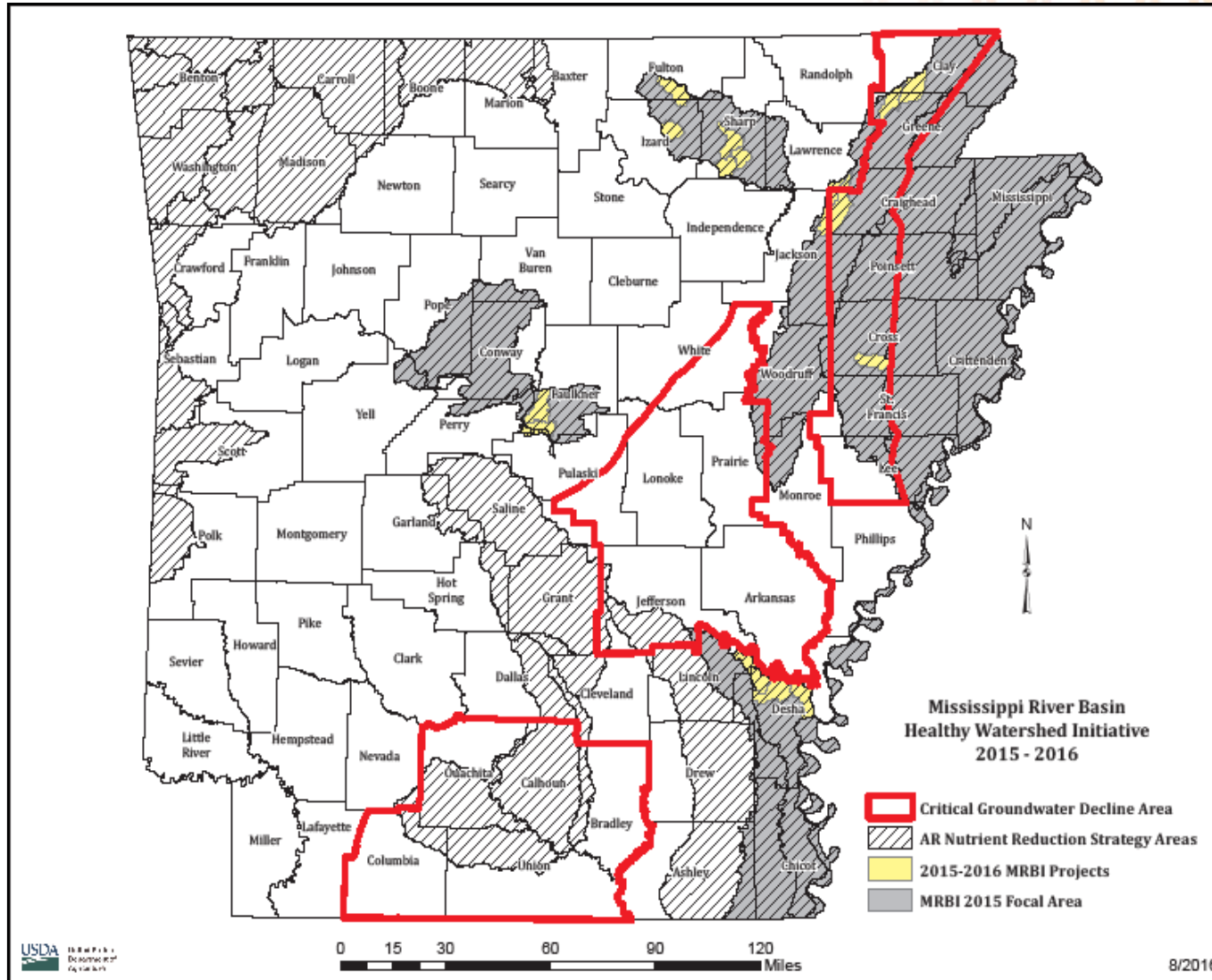


## 2010-2012 Mississippi River Basin Healthy Watershed Initiative Cooperative Conservation Partnership Initiative Projects Arkansas

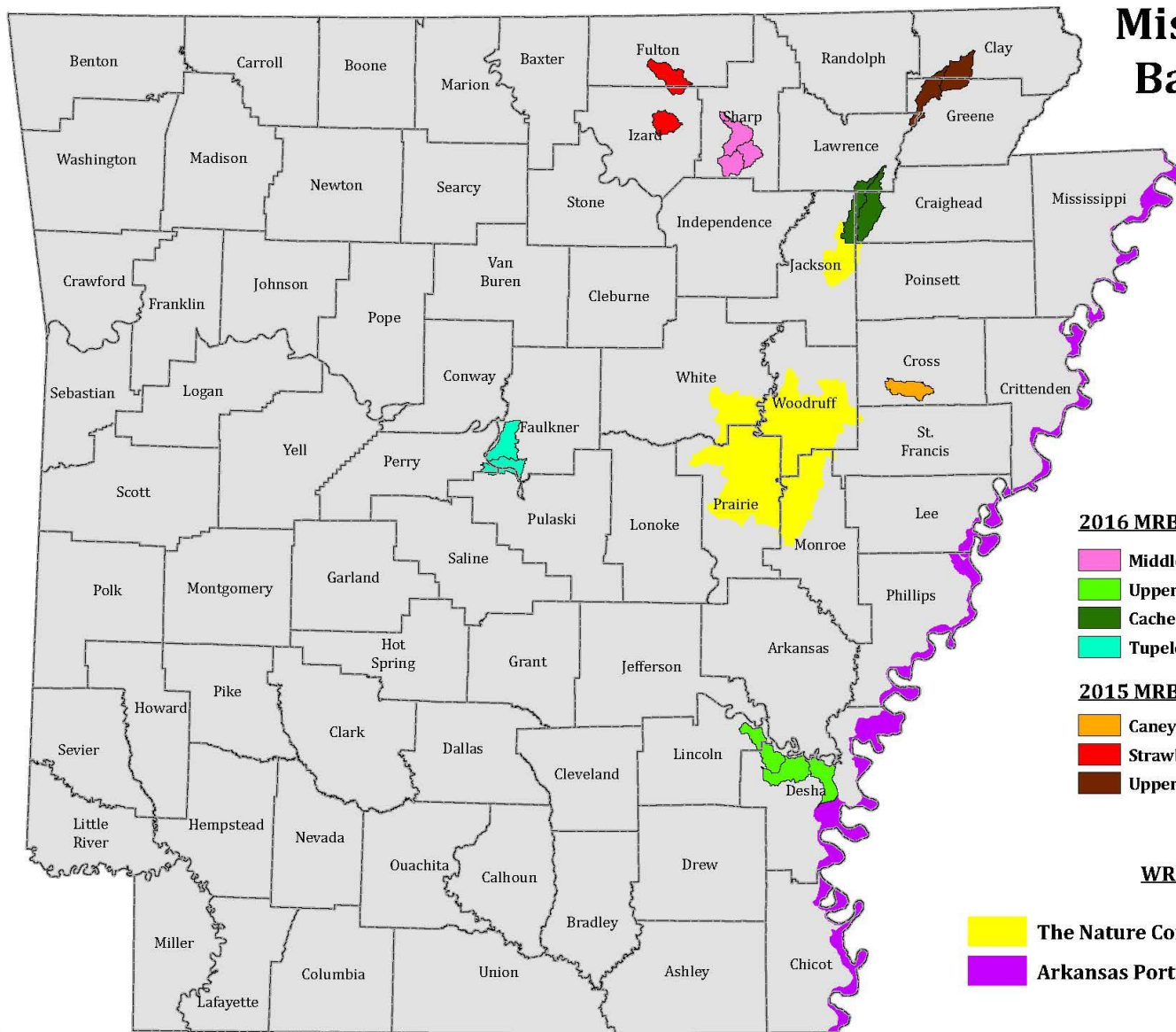


# Nutrient Reduction Priority Watersheds





# Mississippi River Basin Initiative



### 2016 MRBI Projects

- Middle Strawberry
- Upper Bayou Macon
- Cache-Willow-Podo
- Tupelo Bayou-Beaverdam Creek

### 2015 MRBI Projects

- Caney Creek
- Strawberry
- Upper Cache

### WREPs

- The Nature Conservancy WREP
- Arkansas Portion Mississippi River Trust WREP





United States Department of Agriculture

# Two Phase Approach for FY19



Request for Continued  
Funding  
and  
Readiness Phase Request

Due: August 29<sup>th</sup>

No budget established to date

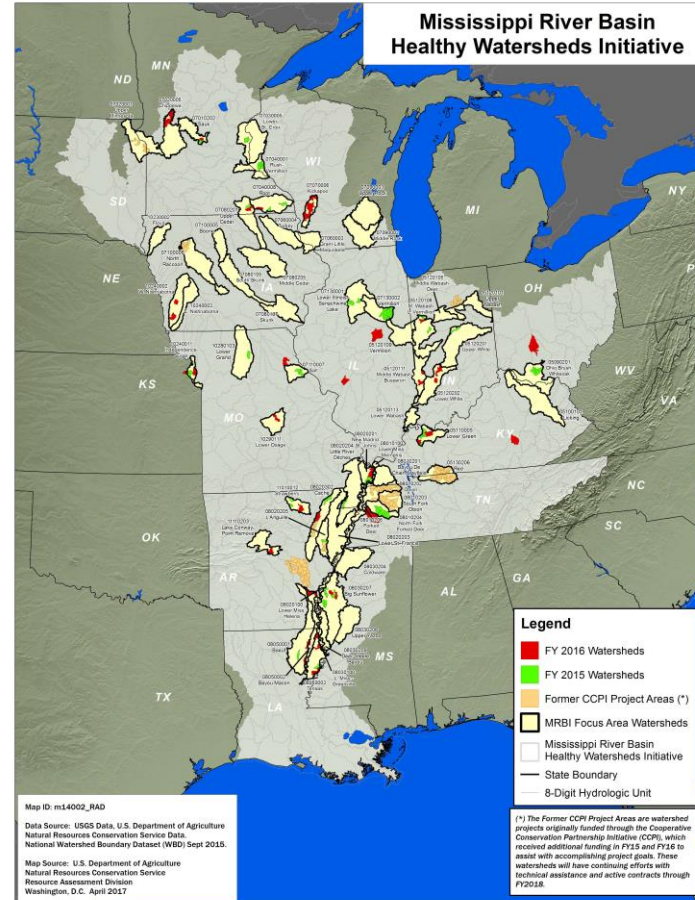


Natural  
Resources  
Conservation  
Service

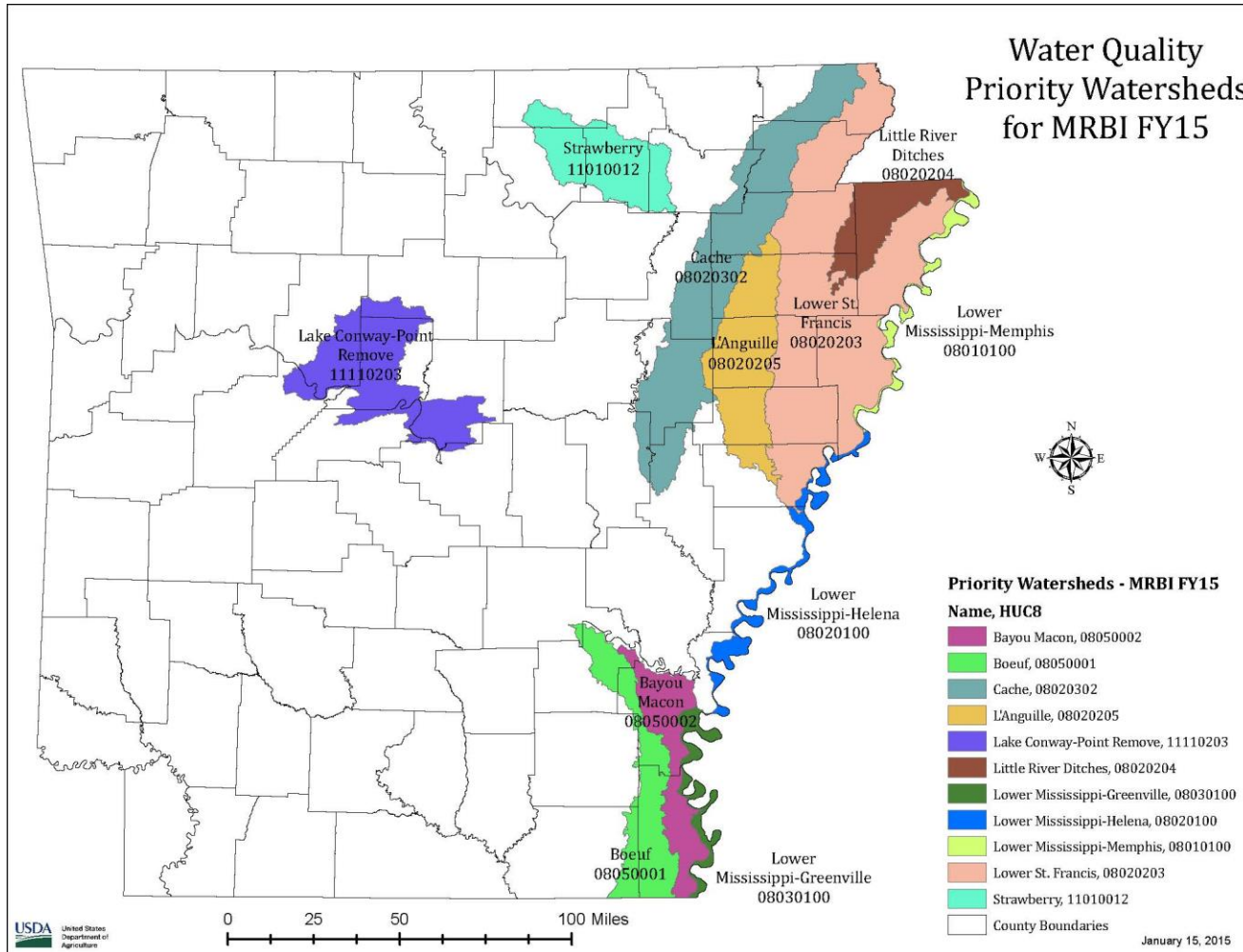
[nrcs.usda.gov/](http://nrcs.usda.gov/)

# Focus Areas for FY19

- Cache (AR) 08020302
- L'Anguille (AR) 08020205
- Point Remove (AR) 11110203
- Little River Ditches (MO & AR) 08020204
- Lower St Francis (MO & AR) 08020203
- Bayou Macon (LA & AR) 08050002
- Boeuf (LA & AR) 08050001
- Strawberry (AR) 11010012



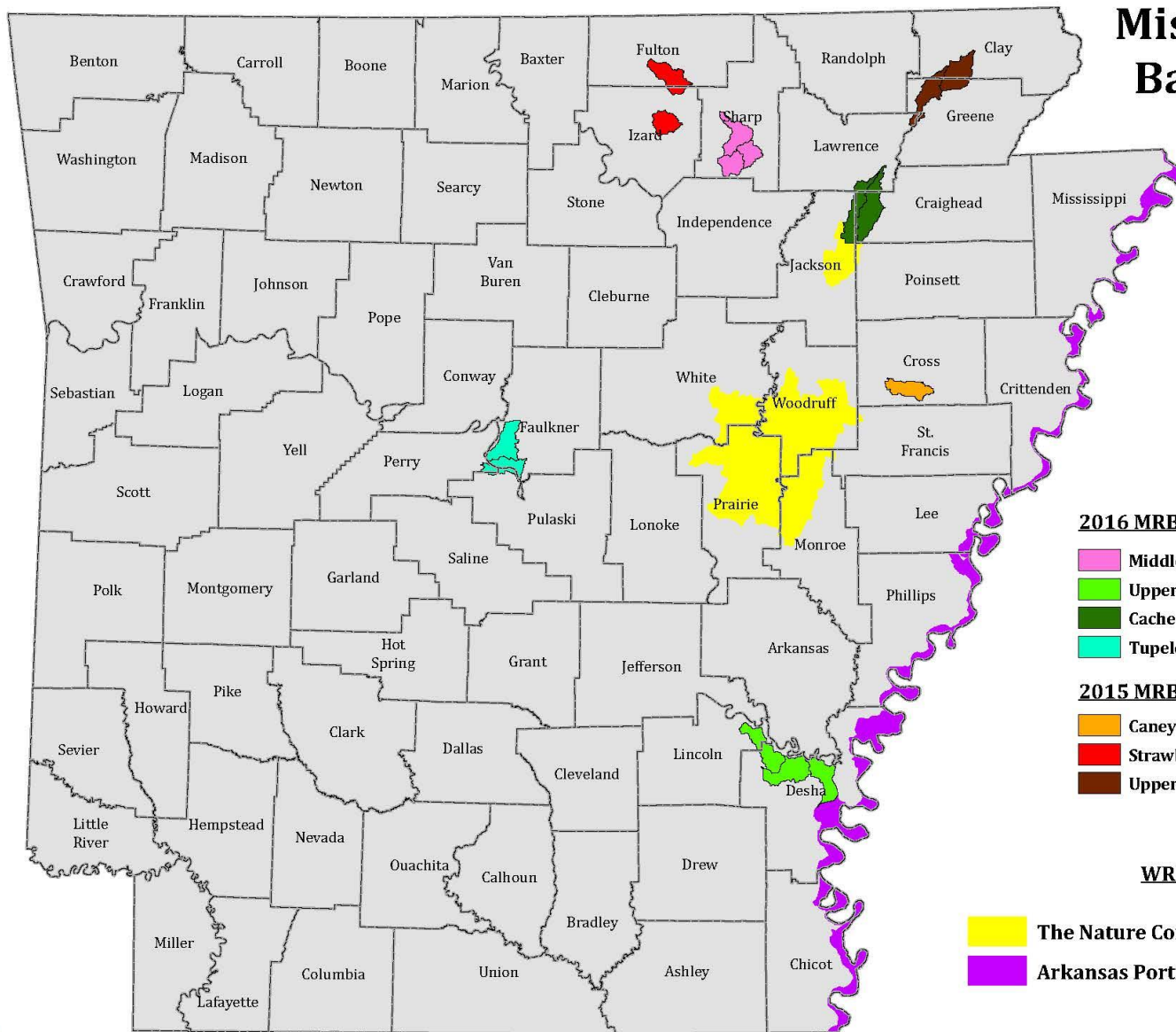
# Priority Watersheds



Natural  
Resources  
Conservation  
Service



# Mississippi River Basin Initiative



### 2016 MRBI Projects

- Middle Strawberry
- Upper Bayou Macon
- Cache-Willow-Podo
- Tupelo Bayou-Beaverdam Creek

### 2015 MRBI Projects

- Caney Creek
- Strawberry
- Upper Cache

### WREPs

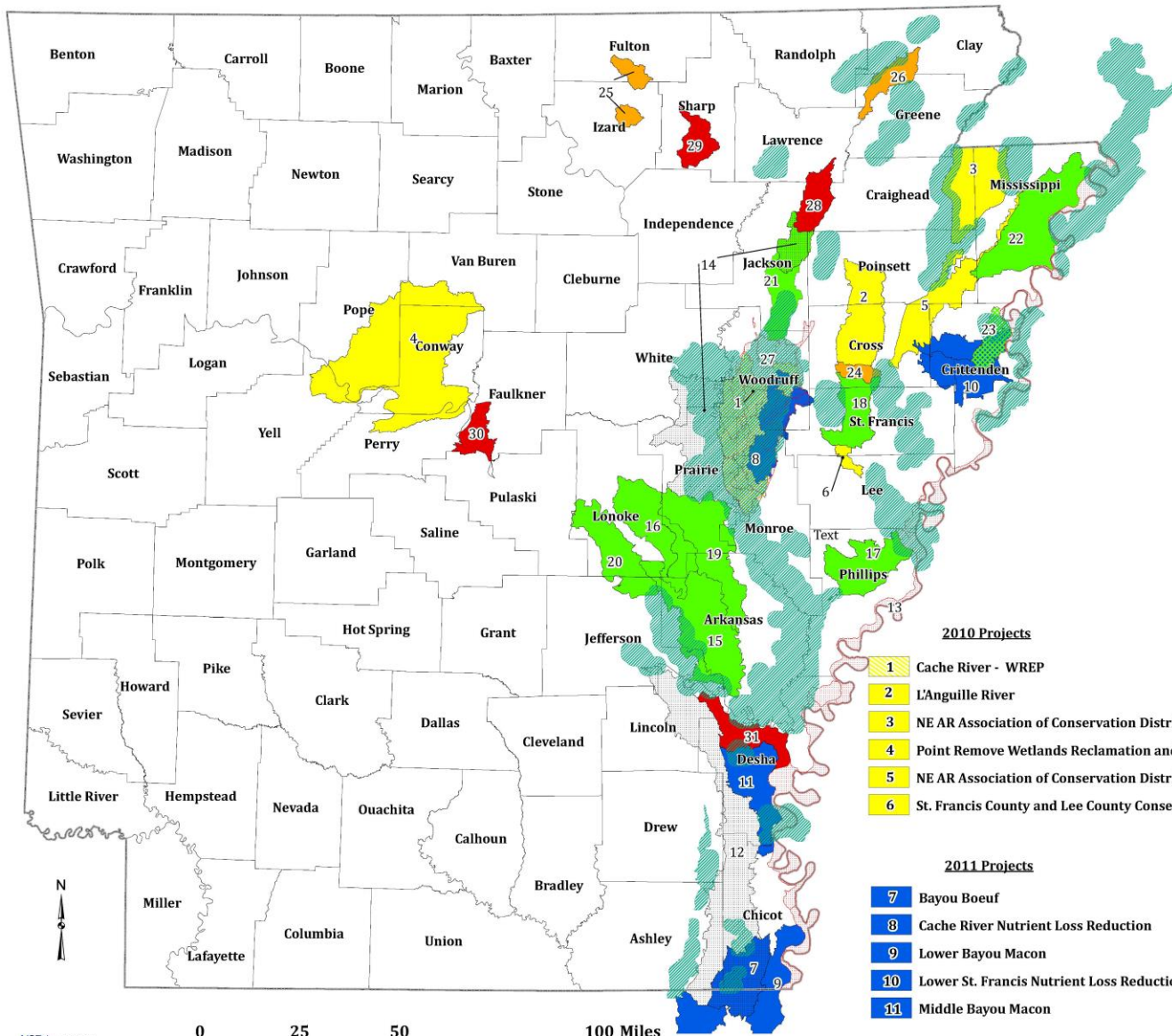
- The Nature Conservancy WREP
- Arkansas Portion Mississippi River Trust WREP

# FY15/16 Projects requesting Funding

Project	# Contracts	Obligations	Acres	Additional Request
Caney Creek	21	\$1,794,937	2,814	\$500,000
Willow-Podo	49	\$2,362,091	6,092	\$1,000,000
Upper Bayou Macon	32	\$3,307,043	9,326	\$1,000,000
Middle Strawberry	43	\$702,845	3,966	\$200,000
Tupelo Bayou-Beaverdam Creek	21	\$1,834,936	9,162	\$300,000



# Mississippi River Basin Healthy Watershed Initiative Projects



- 2012 Projects**
- 12 Arkansas Game and Fish Commission - WREP
  - 13 Mississippi River Trust - WREP
  - 14 The Nature Conservancy - WREP
  - 15 Bayou Meto Arkansas County
  - 16 Bayou Meto Middle
  - 17 Big
  - 18 East Arkansas Enterprise Community BMP
  - 19 Grand Prairie
  - 20 Lower Arkansas Upper
  - 21 Middle Cache River
  - 22 Tyronza River
  - 23 Wapanocca Lake

- 2015 Projects**
- 24 Caney Creek
  - 25 Strawberry
  - 26 Upper Cache

- 2010 Projects**
- 1 Cache River - WREP
  - 2 L'Angeuille River
  - 3 NE AR Association of Conservation Districts Little River Ditches
  - 4 Point Remove Wetlands Reclamation and Irrigation District
  - 5 NE AR Association of Conservation Districts
  - 6 St. Francis County and Lee County Conservation Districts

- 2011 Projects**
- 7 Bayou Boeuf
  - 8 Cache River Nutrient Loss Reduction
  - 9 Lower Bayou Macon
  - 10 Lower St. Francis Nutrient Loss Reduction
  - 11 Middle Bayou Macon

- 2016 Projects**
- 13 Mississippi River Trust - WREP
  - 27 The Nature Conservancy - WREP
  - 28 Cache-Willow-Podo
  - 29 Middle Strawberry
  - 30 Tupelo Bayou-Beaverdam Creek
  - 31 Upper Bayou Macon

- 2017 Projects**
- Tri-State Mississippi Alluvial Valley - WREP
  - 13 Mississippi River Trust - WREP



# Readiness Phase Request

- Is HUC 8 identified as an MRBI focus or a priority for the State's Nutrient Loss Reduction Strategy?
- Any surface water drinking water sources in the HUC12?
- Current Monitoring activities?
- Which partners are currently working within the watershed?
- How does the watershed fit into the state Nutrient Loss Reduction Strategy and how will the assessment assist with this Strategy?
- What plans or resource assessments are available for the HUC12. Such as 319 plans, TMDL implementation plans, and other watershed assessments?
- What data gaps exist?





United States Department of Agriculture



# What do we need?

# Questions?



Natural  
Resources  
Conservation  
Service

[nrcs.usda.gov/](https://nrcs.usda.gov/)





United States Department of Agriculture

# Changes to NWQI

## Multi-year budgets



Expand focus areas to include waterbodies that provide drinking water.



Natural  
Resources  
Conservation  
Service

[nrcs.usda.gov/](https://nrcs.usda.gov/)



United States Department of Agriculture

# NWQI



Contact information:

Teri Nehls-501-301-3179



Natural  
Resources  
Conservation  
Service

[nrcs.usda.gov/](https://nrcs.usda.gov/)

# Dates to Remember

Deadline August 29<sup>th</sup>

Webinar for MRBI and NWQI-August 14<sup>th</sup> 2:00-3:00 pm  
topics

Readiness Phase proposed watersheds – requirements

Watershed assessment guidance

Multi-year proposal requirements

Development of goals and metrics





United States Department of Agriculture

## Contact Information



**Dianne Schlenker -501-301-3152**  
**Cell-501-412-9852**

**Amanda Mathis- 501-301-3162**



Natural  
Resources  
Conservation  
Service

[nrcs.usda.gov/](http://nrcs.usda.gov/)