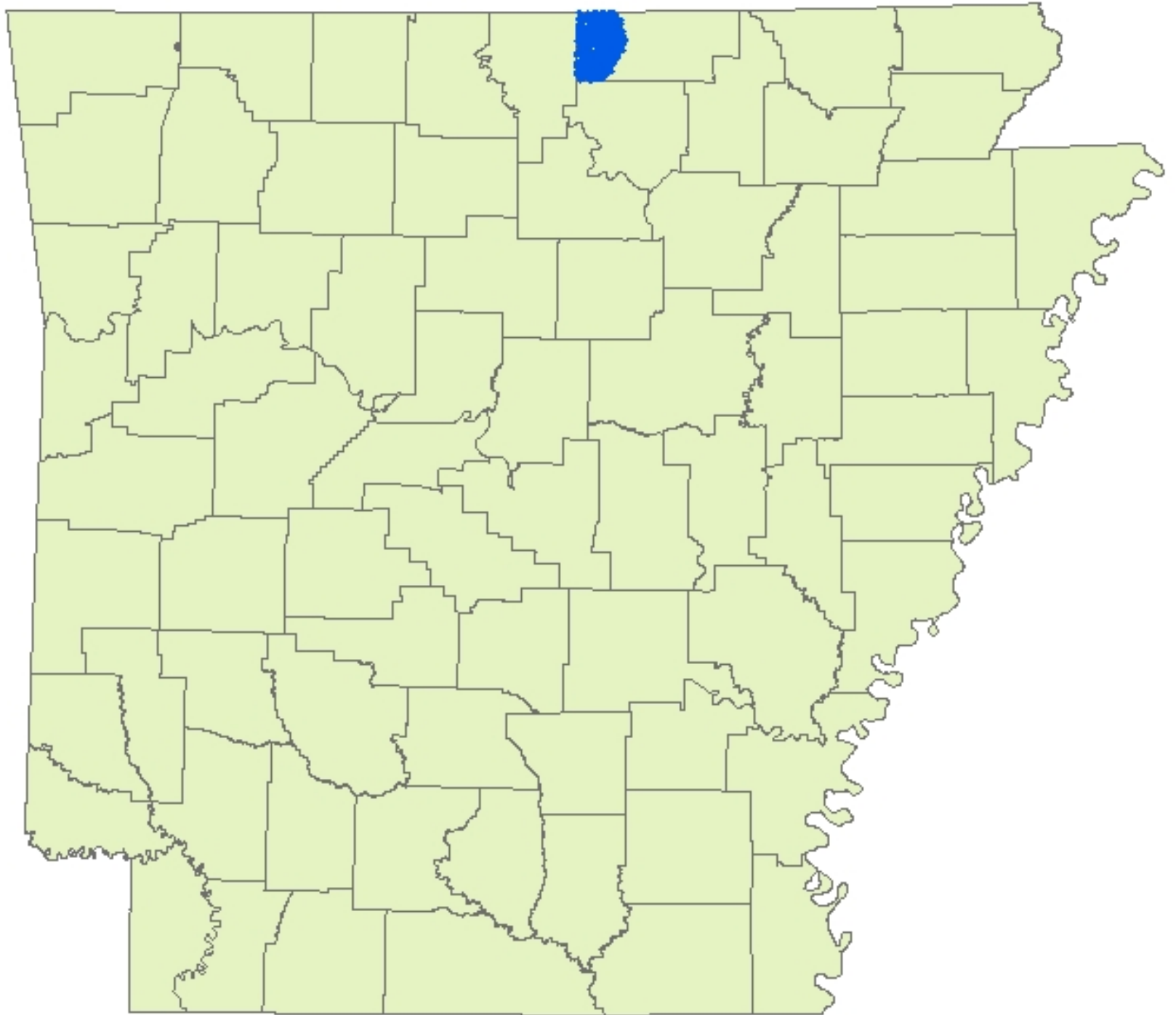
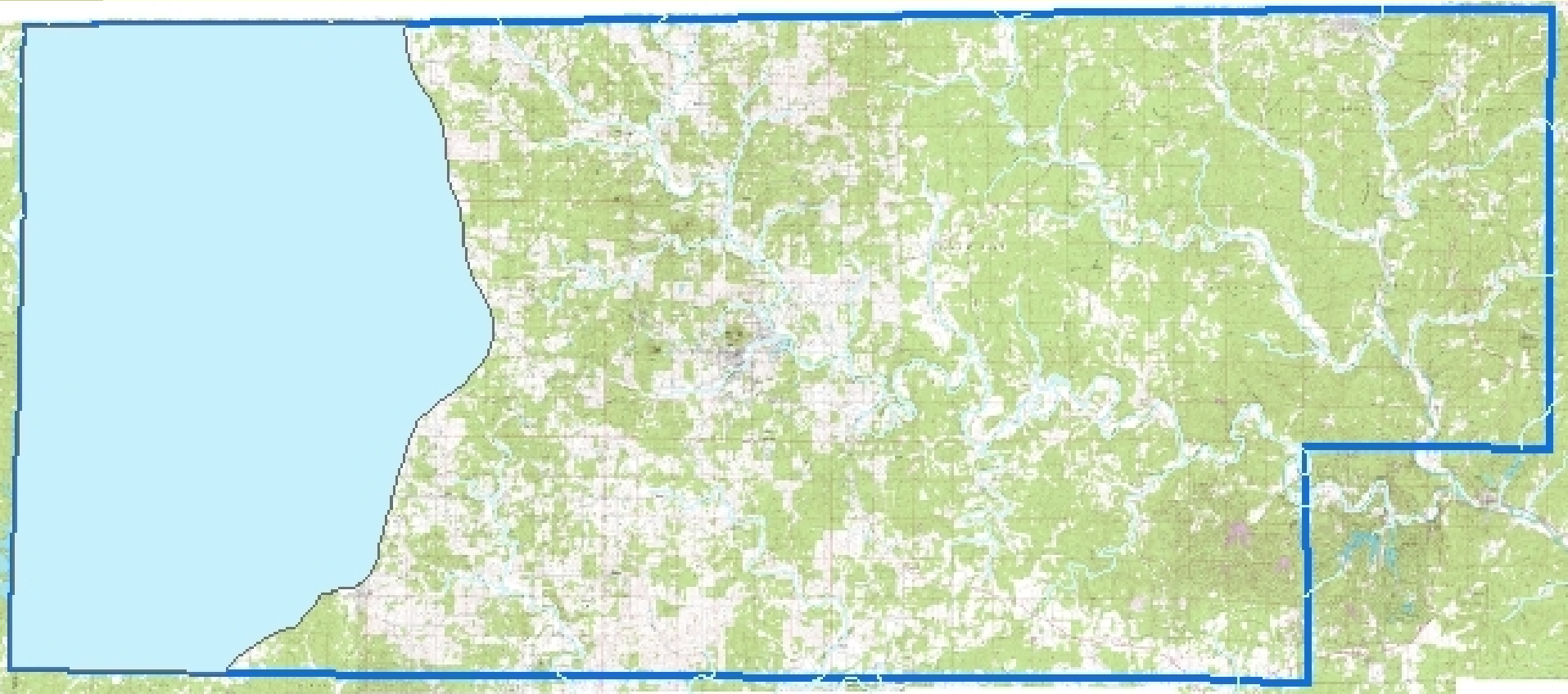


# Lower Norfolk Dam Watershed Project (06-200)

Fulton County Conservation District  
Arkansas Natural Resource Commission  
U S Environmental Protection Agency





# Priorities for Planning

---

- Farms that are within or partially within a wellhead protection area.
- All farms with riparian access along blue line streams as indicated on the 7.5 minute USGS quadrangle maps.
- All farms that lie within 1 Mile of a blue line stream.

# Getting the word out

---

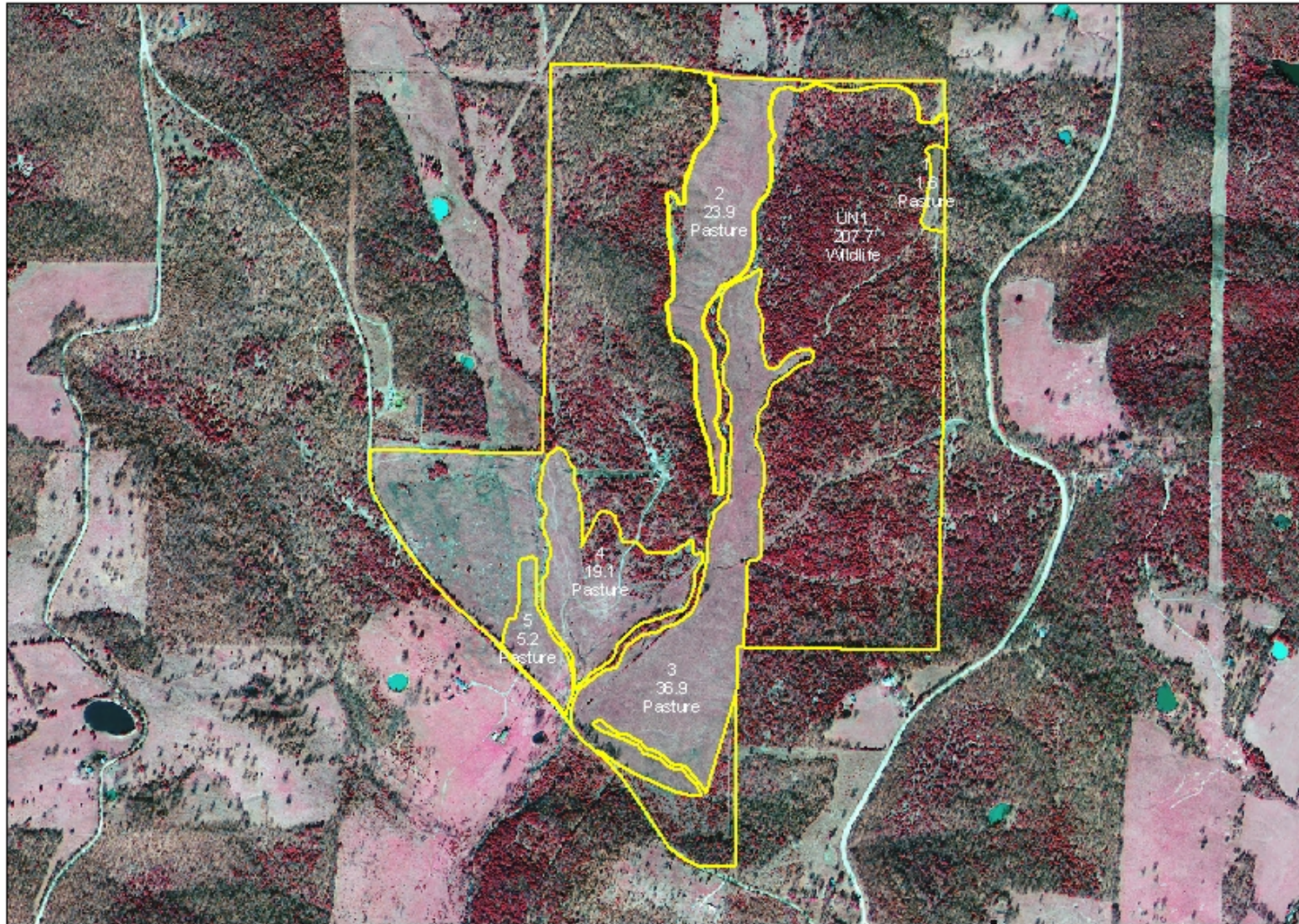
- Word of mouth
- Newsletter
- Grass Conference
- Equipment Rentals
- Newspaper
- Television
- Insurance
- Field days
- Viola Cafe

# Lower Norfolk Dam Project

Customer(s): GERALD NORFORK  
District: FULTON COUNTY CONSERVATION DISTRICT  
Approximate Acres: 294.4

Field Office: SALEM SERVICE CENTER

State and County: AR, FULTON

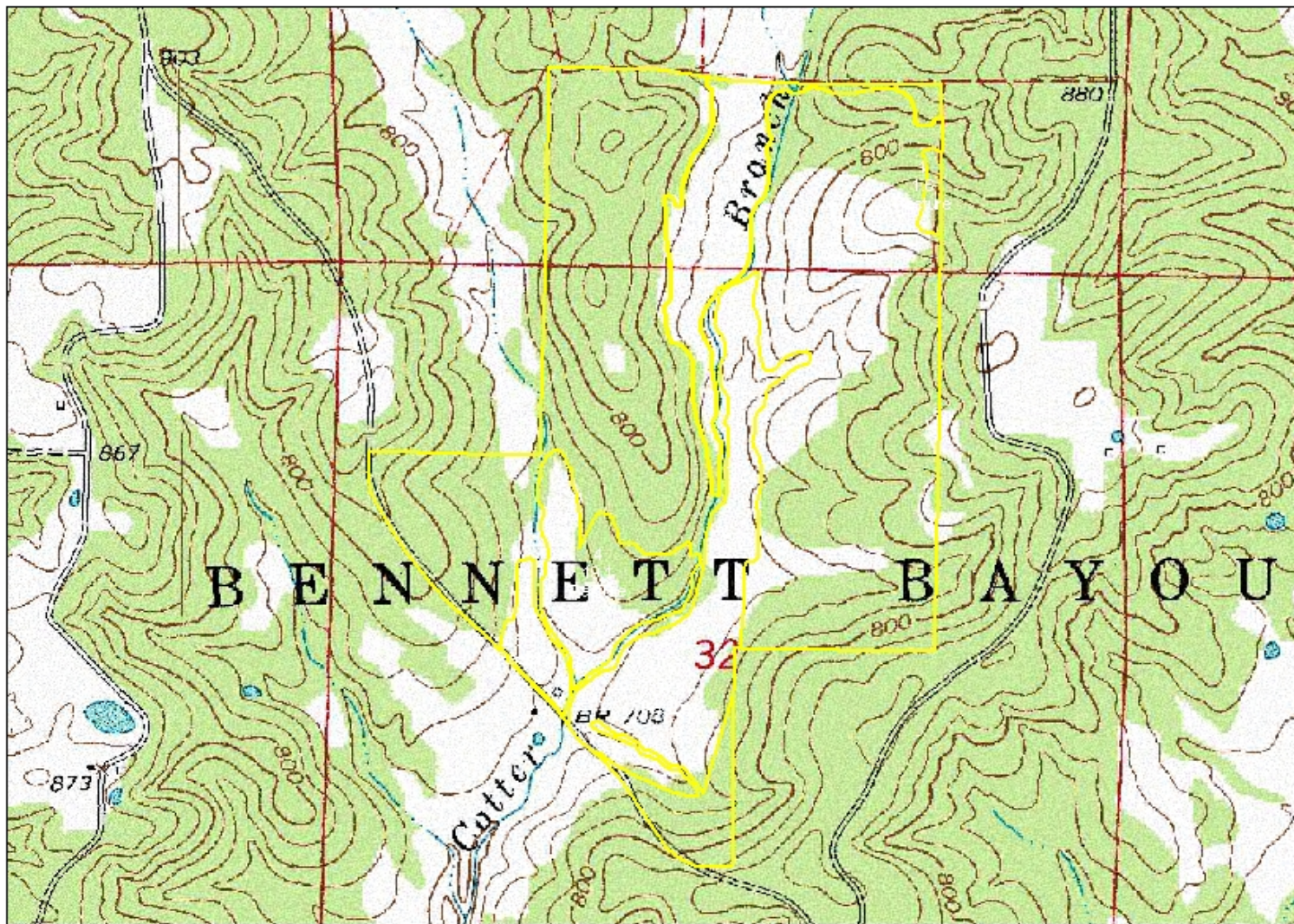


# Lower Norfolk Dam Project

Customer(s): GERALD NORFORK  
District: FULTON COUNTY CONSERVATION DISTRICT  
Approximate Acres: 294.4

Field Office: SALEM SERVICE CENTER

State and County: AR, FULTON



### Legend

 Consplan2

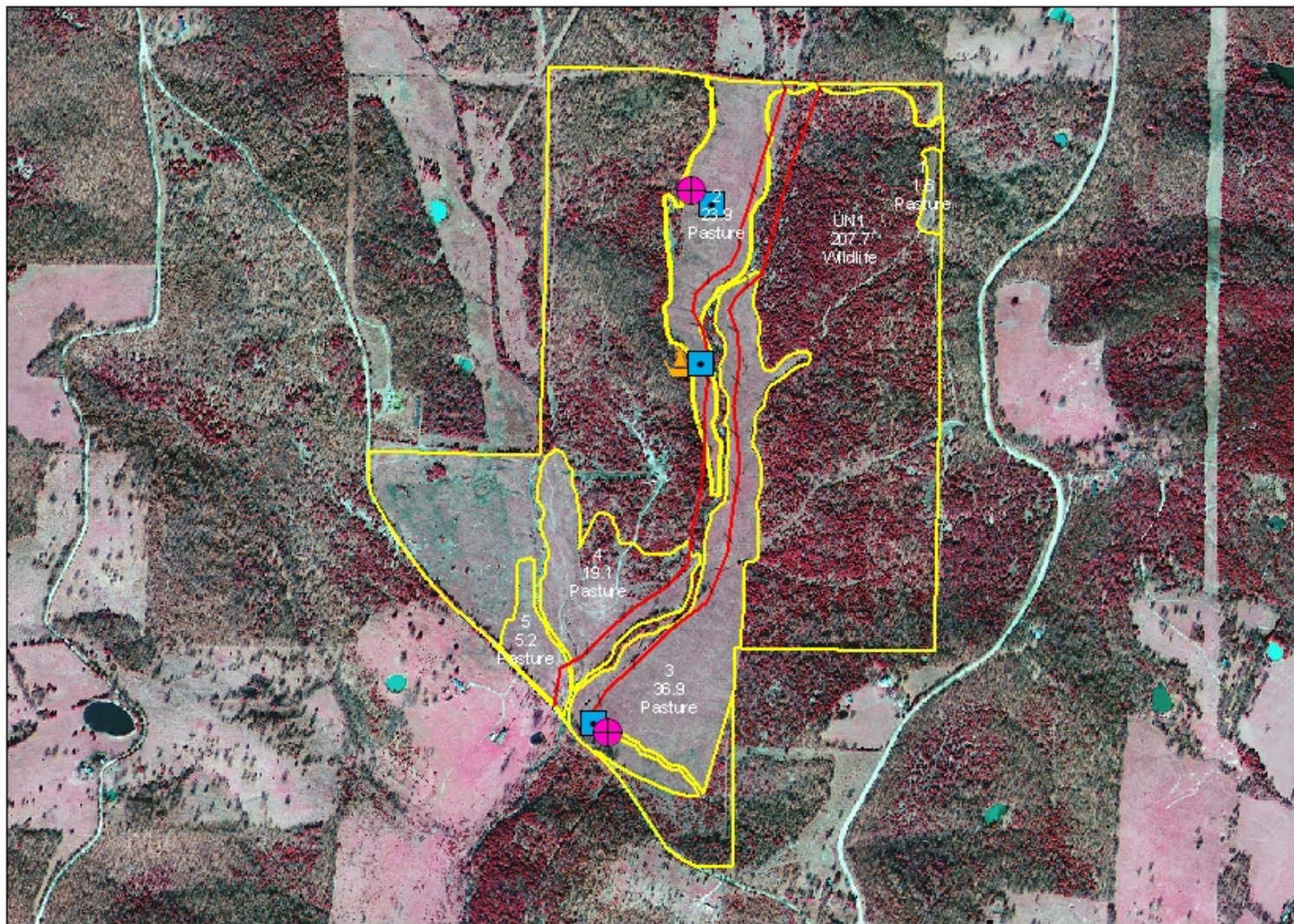


# Lower Norfolk Dam Project

Customer(s): GERALD NORFORK  
District: FULTON COUNTY CONSERVATION DISTRICT  
Approximate Acres: 294.4

Field Office: SALEM SERVICE CENTER

State and County: AR, FULTON



### Legend

- Pond
- Water Well
- Watering Facility

### Practice name

- Fence
- Consplan2
- Clay
- perryman



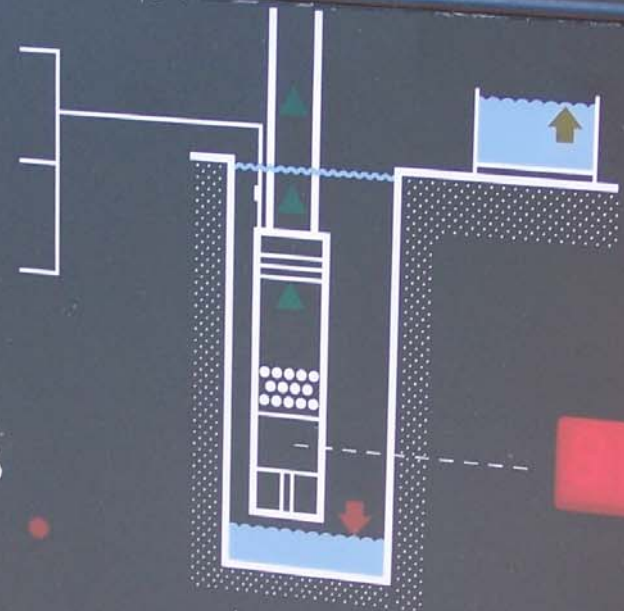




HOLTERS

1500  
WATER





CU 200 SQFlex



kWatt

GRUNDFOS 



# Conservation Planning

---

- 168 Farm Plans on 45,287 acres
- 83 Contracts for \$275,000.00
- \$204,225 paid to farmers as of 7/1/2008
- 55,899 ft of streams with livestock excluded

# BMP's Installed

- Pasture and Hayland Planting (512).....693 acres
- Fence (382).....190,457 ft
- Watering Facilities (614).....33 ea
- Heavy Use Area Protection (561).....13 ac
- Brush Management (314).....1510 ac
- Spring Development (574).....1 ea
- Pond (378).....3 ea
- *Brush Management (NC) (314).....3407 ac*
- *Prescribed Grazing (NC) (528).....843 ac*
- *Nutrient Management (NC) (590).....4520 ac*
- *Water Well (642).....3 ea*