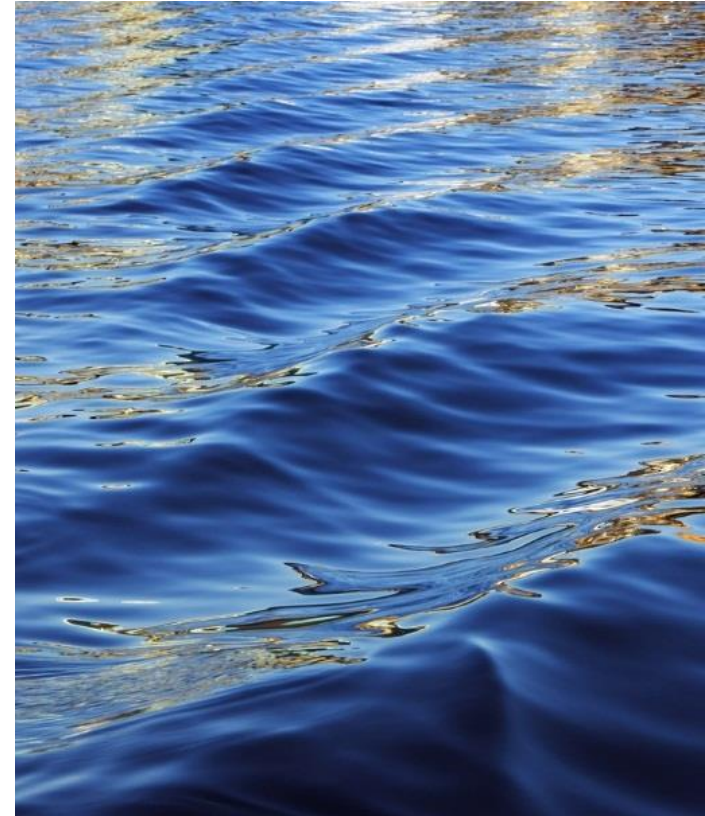


Boone County Bull Shoals Watershed

July 2012-June 2015

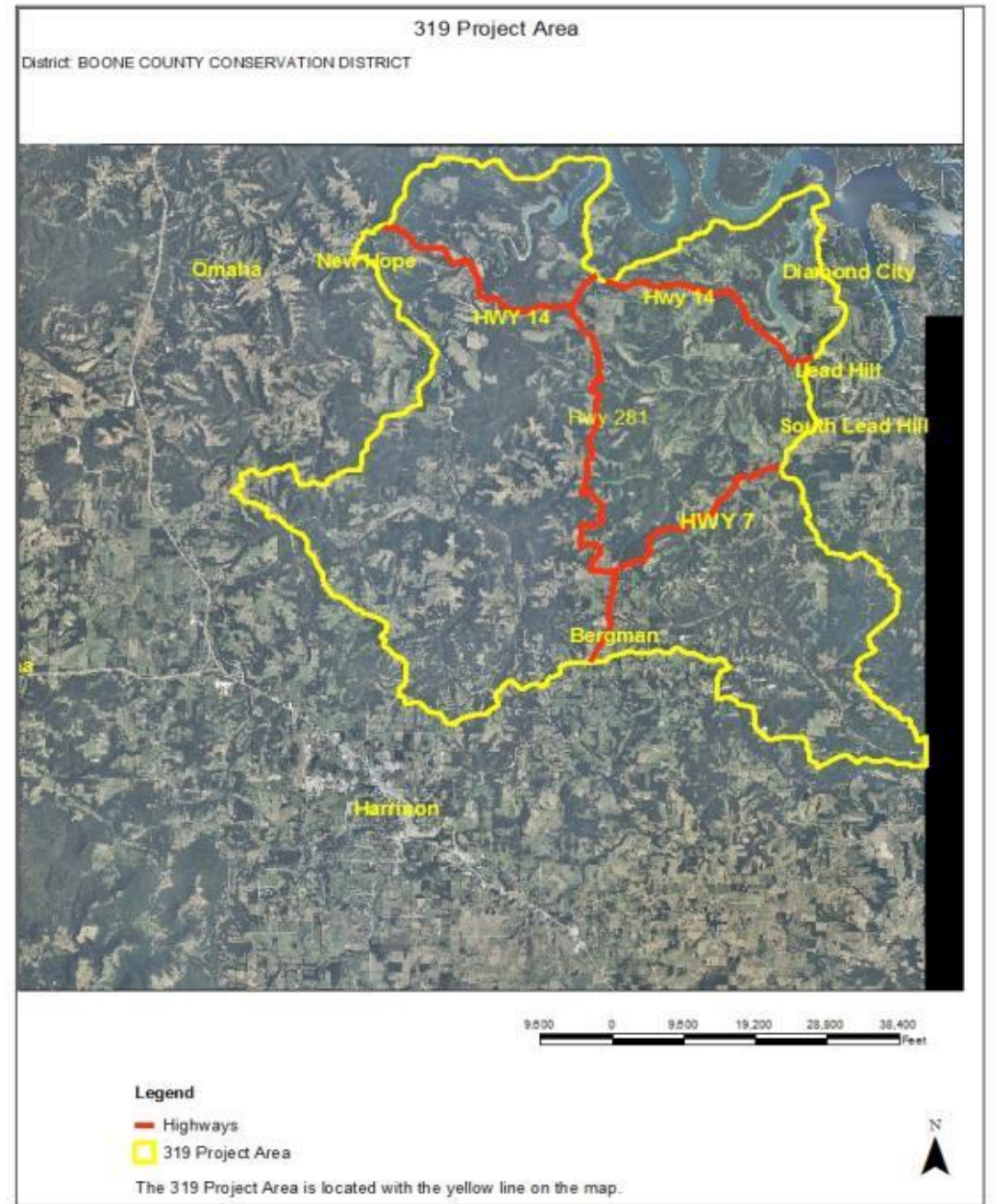
Presented by: Boone County Conservation District



Project Focus

Five sub watersheds:

- West Sugarloaf Creek
- Middle Bear Creek
- Lower Bear Creek
- Cheatham Creek
- Sugar Orchard Creek



Project Goal

Encourage voluntary participation of Best Management Practices (BMPs) on 50% of pastureland (approximately 12,065 acres)



Planned Project Funding:

Federal: \$127,749

Non Federal: \$98,420

Total: \$226,169

Accomplishments

39 farm/conservation plans were written during our project time. 31 were tied to contracts for cost-share.

ITEMS IN PROJECT FOR FUNDING			
Item	# Planned	# Accomplished	% Accomplished
Farm Plans	39	39	100%
Assistance with Farm Plans & Return Visits	117	117	100%

Accomplishments

Item	#of Acres	Total Reduction Of Sediment Loss	% Accomplished
Total Farm Plans	7,809	23,505 tons	64.73%



Actual Expenditures and Match

Federal: \$113,874.15

Non Federal: \$92,167.44

Total: \$206,041.59

BMPs Installed

Cross Fencing & Exclusion Fencing 6,903 feet



2724 feet of livestock exclusion fence was installed by operator who owns property along the banks



BMPs Installed

Watering Facilities, Heavy Use Areas & Pipelines

- 13 facilities installed
- 16 heavy use areas
- 16,313 ft. of pipeline



BMPs Installed



Before planting

After planting



Forage/Biomass Planting & Brush Management

- **356.4 ac planted**
- **228.10 ac for brush management**

Right: Brush management was used in this field to remove undesired species. Operator will establish desired forage to improve ground cover and provide livestock with forage. This will improve his rotational grazing system.



BMPs Installed

Ponds
9,482.4 CuYd



Left: Small area fed by a spring. Cattle utilized the area, and erosion was prevalent.

Right: The same area was developed into a pond; livestock was excluded by fencing. A freeze proof tank was installed on the backside.



Outreach

- sent out 12 quarterly newsletters throughout the project period
- 284 fact sheets were mailed to landowners in the project area
- Two field days highlighting the project were held on
April 27, 2013 and April 12, 2014
- Highlighted on website www.boonecd.com



Those Aiding in the Project

- Boone County Conservation District
- Natural Resource Conservation Service
- Arkansas Natural Resources Commission
- US Environmental Protection Agency



Field Day 2013



Field Day 2014

Happy Cows=Happy Profitable Farmers

**Join Boone County Conservation District for a
Pasture Field Day**

Saturday, April 27, 2013
9:30 am-1:00pm
(Registration begins at 9:30 with the program beginning at 10 am)

Location: David Thompson Farm, Lead Hill, AR
From Harrison, take Hwy 7 North towards Lead Hill for 14.5 miles; turn left onto Cedar Grove Rd North; travel for 3.3 miles and continue straight onto Pleasant Valley Road; go for 1.1 miles and arrive at the farm: 3455 Pleasant Valley Dr.

- Learn about effective Brush & Weed Control Methods
- Pasture Recovery and Water Sources During / After A Drought
- How To Plan Best Management Practices for Livestock Operations
- Discussion of Financial Assistance Programs

There will be a no till drill and brush control demonstrations.

If you attend the Field day—including demonstrations—you will receive a one-time 10% discount towards rental of the no till drill from the District (offer applies to land no tilled in Boone County; discount does not apply to the security deposit or repairs incurred by the operator)

Call to reserve lunch: (870) 741-8600, ext. 3
Bring your own Lawn Chair!

Sponsored by the Boone County Conservation District with speakers from: USDA-Natural Resources Conservation Service
U of A Division of Agriculture Cooperative Extension Service
USDA IS AN EQUAL OPPORTUNITY PROVIDER AND EMPLOYER

This meeting is open to all eligible persons without regard to race, color, national origin, religion, gender, age, disability, marital or veteran status, or any other legally protected status. Persons with disabilities who require alternative means for communication of program information (large print, audiotapes, etc.) should notify the county Extension office (or other appropriate office) as soon as possible prior to the activity.



Conclusion

Accomplishments

- Had several operators/landowners become first time customers of the District.
- Able to provide much needed cost share assistance in halting erosion due to the drought of 2012. With our project we were able to help establish much needed ground cover at a critical time.
- Operators are beginning to see the advantages and the ease involved in creating a rotational grazing system as a best management practice.

Lessons Learned

- In the planning stages, more of the watershed should have been included as the project area.
- Advertise as much as possible.



QUESTIONS?

