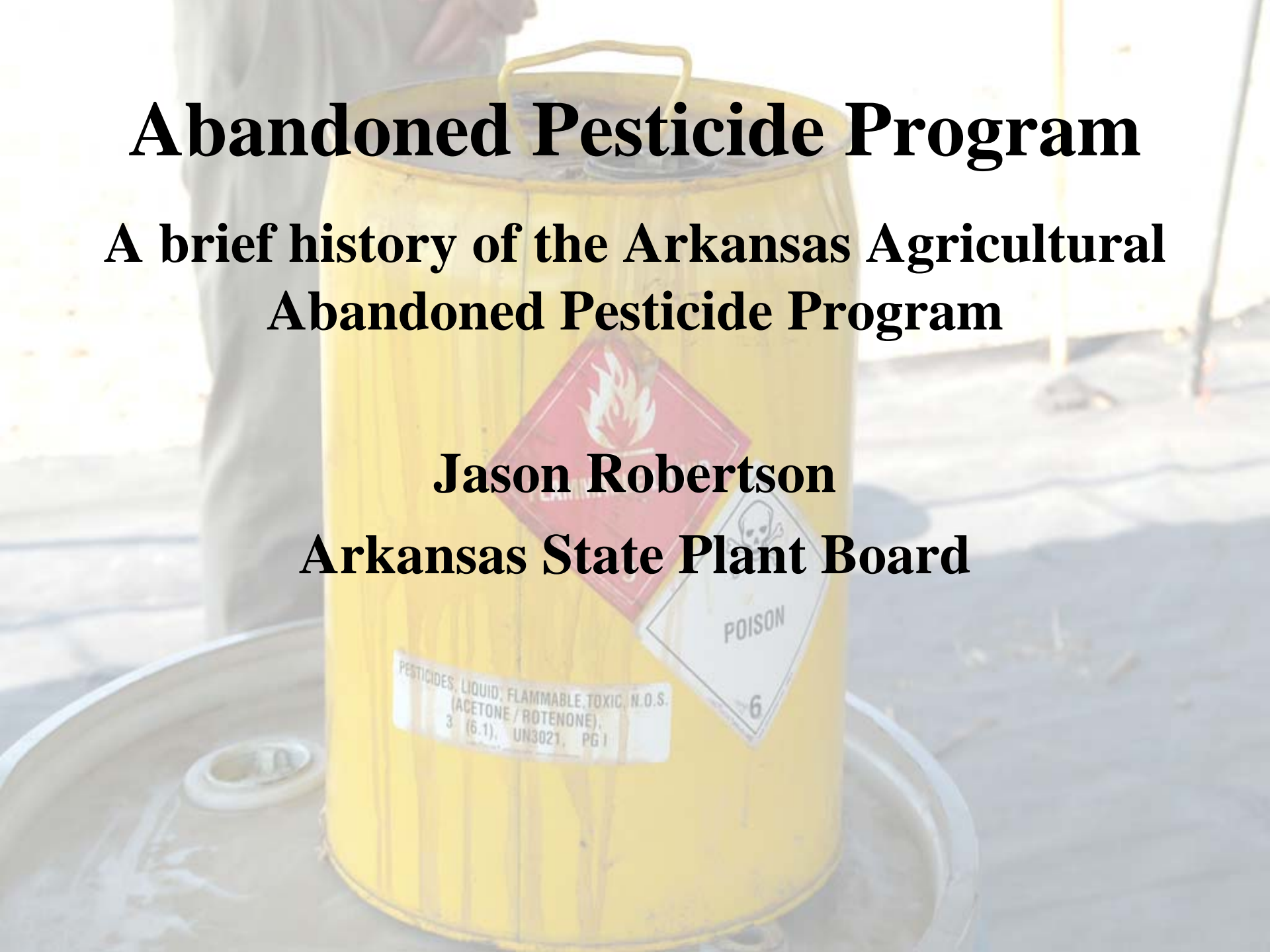


Abandoned Pesticide Program

**A brief history of the Arkansas Agricultural
Abandoned Pesticide Program**

Jason Robertson

Arkansas State Plant Board



Establishment of the Program

- **Arkansas's Abandoned Pesticide Program began with the passage of Act 1174 in 1999.**
- **The act established an Abandoned Pesticide Advisory Board and charged the Arkansas State Plant Board with implementation of the program.**
- **The program was developed as a way for farmers to safely dispose of old or unwanted pesticides.**

Who is Involved?

- **The Abandoned Pesticide Advisory Board is made up of members from The Arkansas State Plant Board, The Arkansas Department of Environmental Quality, The University of Arkansas Cooperative Extension Service, The Arkansas Natural Resources Commission and Arkansas Farm Bureau.**

Testing the Program

- In the year 2000 Benton county in Northwest Arkansas was chosen as the test county.
- 31,154 pounds of unwanted pesticides were collected.
- Act 1130 of 2001 required the pesticide manufacturers to pay a fee for each agricultural pesticide they register in Arkansas.

Addressing Concerns



- **The Abandoned Pesticide Advisory Board feared the collections would cost more than was in the budget.**
- **The farmers were afraid to trust regulatory agencies.**
- **These concerns were the foundation of the program.**

Addressing Concerns

- **The concerns of the Advisory Board were addressed by conducting the collections on a county by county basis.**
- **The collection is promoted within the selected county.**
- **Inventory sheets are used to pre-determine intended submissions.**

Producer Anonymity

- **The fears of the farmers were eased by the promise of anonymity.**
- **Farm Bureau is very important in helping with anonymity.**
- **Farm Bureau is a private company and is not subject to the Arkansas Freedom of Information Act (FOI).**

The Inventory Sheets

- **The inventory sheets are submitted to Farm Bureau.**
- **The state agencies do not see the farmers' contact information.**
- **The inventory sheets are used to calculate the approximate cost of the collection.**
- **The hazardous waste contractor has access to the information when an on site pick up is required.**

Early Collection Events

The background of the slide is a photograph of a wooden shelving unit. The shelves are filled with many plastic jugs of various sizes and colors, including white, blue, and grey. Some jugs are stacked, while others are placed individually. The lighting is warm, and the overall scene suggests a storage area for water collection equipment.

- **The first collection event after the passage of act 1130 of 2001 was not held until 2005.**
- **The delay allowed funding to build up.**
- **The Advisory Board selected the Mississippi River delta region for the first collections.**
- **These events were not as well received as hoped.**

Early Lessons Learned

- **Lack of trust greatly impacted participation.**
- **Time of year greatly influences turn out.**
- **Collections are now held in early Spring and late Fall.**



How Much?

- **An inventory sheet was submitted listing 4,000 pounds of Calcium Arsenate.**
- **There was actually 40,000 pounds of Calcium Arsenate.**
- **This greatly helped promote the program in the farming community.**

Collection Events



- **2006 - Nine Collection Events.**
- **2007- Six Collection Events.**
- **2008- Ten Collection Events.**
- **2009- Twelve Collection Events**
- **Over 664,000 pounds of unwanted pesticides collected to date.**

Goals

- **The main goal is to hold at least one collection in every county in Arkansas.**
- **Some of the early counties will be revisited as funding allows.**
- **After the delta our plan is to visit the Arkansas River Valley areas.**
- **The program is for farmers only.**



CONTAINER

NET WT 50 LBS (22.7 KG)
GROSS WT 55 LBS (25.0 KG)
NET WT 50 LBS (22.7 KG)
GROSS WT 55 LBS (25.0 KG)
NET WT 50 LBS (22.7 KG)
GROSS WT 55 LBS (25.0 KG)

FUMIGANT

FUMIGANT

FUMIGANT

ANT

FUMIGANT

CONTROL
INSECTS
RODENTS
FUNGI

lar

FUMIGANT

PRECAUTIONS

DRUM



CONTAINER

FUMIGANT

FUMIGANT

FUMIGANT

FUMIGANT

FUMIGANT

CONTROLS
INSECTS
RODENTS
FUNGI
IN GRAIN
OR IN
GRAIN
BINS

Larvacide
GRAIN FUMIGANT
SPACE FUMIGANT
SOIL FUMIGANT

Larvacide
GRAIN FUMIGANT
SPACE FUMIGANT
SOIL FUMIGANT
CONTROLS

Larvacide
GRAIN FUMIGANT
SPACE FUMIGANT
SOIL FUMIGANT
CONTROLS

CONTROLS
INSECTS
RODENTS
FUNGI
IN GRAIN
OR IN
GRAIN
BINS

ALL DRY





IC-YD



CONTENTS 5 GALLONS

AMINE 2,4,5-T FOR RICE

Amine 2,4,5-T For Rice is formulated to contain 4 pounds 2,4,5-T acid equivalent per gallon and has been effective in killing certain broadleaf weeds in rice.

CAUTION: Keep out of the reach of children.
See other cautions on side panel.

ACTIVE INGREDIENT:

*Triethylamine salt of 2,4,5-trichlorophenoxyacetic acid _____ 58.8%

INERT INGREDIENTS _____ 41.2%

*2,4,5-trichlorophenoxyacetic acid equivalent 40.8% by weight or 4 pounds per gallon.

MADE IN U.S.A.

**UNION CARBIDE AGRICULTURAL
PRODUCTS COMPANY, INC.**

AMBLER, PA. 19002

Clinton, IA • St. Joseph, MO

EPA Reg. No. 264-86

EPA Est. 264-MO-1





NON-REUSABLE
CONTAINER







ABANDONED PESTICIDE COLLECTION SUMMARY

AGRI-REGIONS

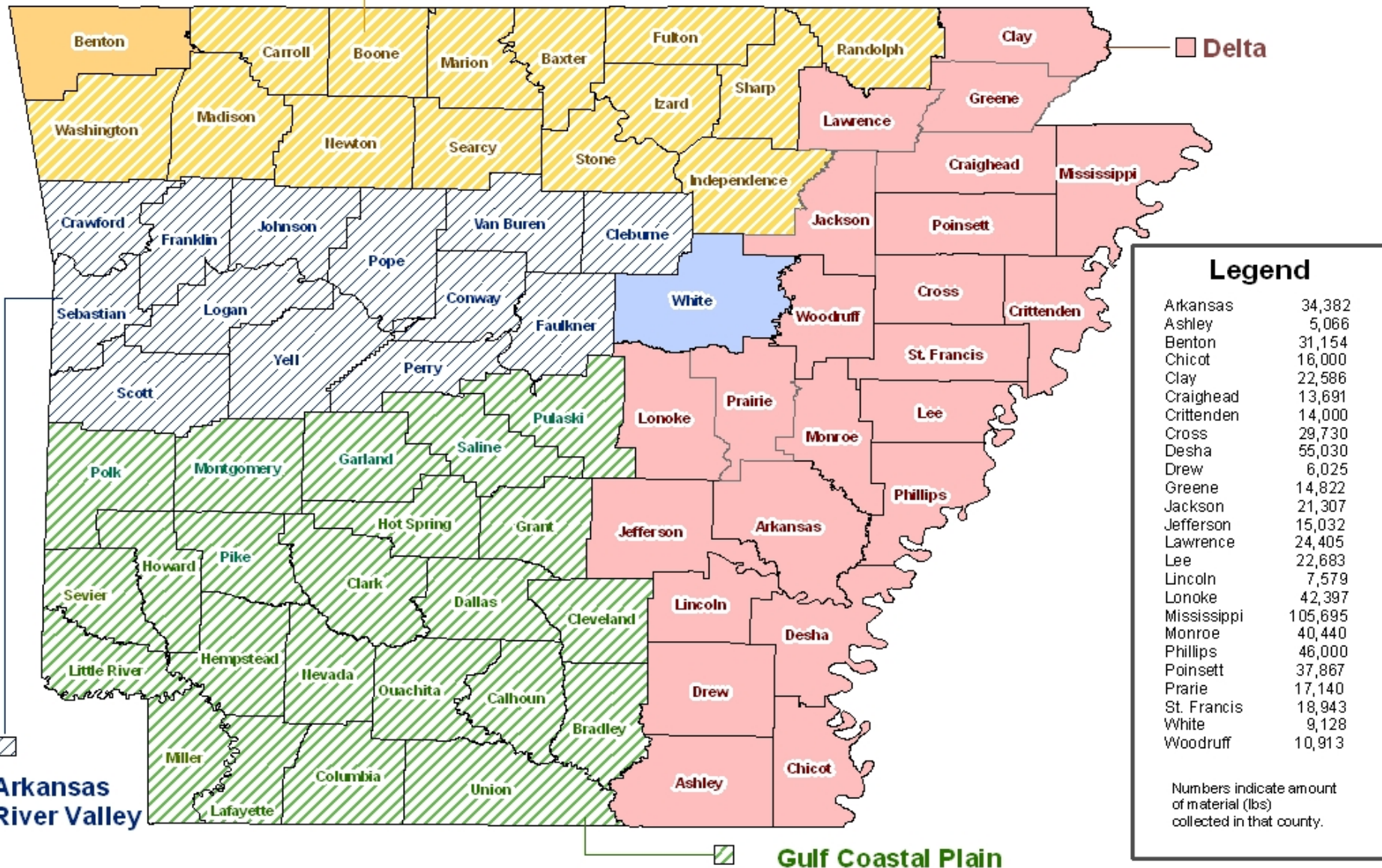
Arkansas River Valley

Boston Mountains / Ozark Highlands

Delta

Gulf Coastal Plain

 Boston Mountains / Ozark Highlands



Legend

Arkansas	34,382
Ashley	5,066
Benton	31,154
Chicot	16,000
Clay	22,586
Craighead	13,691
Crittenden	14,000
Cross	29,730
Desha	55,030
Drew	6,025
Greene	14,822
Jackson	21,307
Jefferson	15,032
Lawrence	24,405
Lee	22,683
Lincoln	7,579
Lonoke	42,397
Mississippi	105,695
Monroe	40,440
Phillips	46,000
Poinsett	37,867
Prarie	17,140
St. Francis	18,943
White	9,128
Woodruff	10,913

Numbers indicate amount of material (lbs) collected in that county.



?
? Questions ?
?